

Title: SigmaWin+ Version 7 Usage Notes

Product(s): SigmaWin+ Version 7.44

Doc. No. SigmaWinPlus_Ver.7

About This Document

This document provides information related to the installation and usage Yaskawa's SERVOPACK Engineering Tool SigmaWin+ version 7.44 for Sigma-series AC SERVOPACKs. Read and understand this document to ensure the correct usage of SigmaWin+.

Contents

1. System Requirements	2
2. Upgrading Information	3
3. Installation Instructions	4
4. Additional Installation Notes	5
5. Installation Troubleshooting	6
6. Program Launch Troubleshooting	8
7. Program Usage Troubleshooting	12

Title: SigmaWin+ Version 7 Usage Notes

Product(s): SigmaWin+ Version 7.44

Doc. No. SigmaWinPlus_Ver.7

1. System Requirements

The computer to install and use SigmaWin+ requires the following specifications.

Specification	Requirement
Operating System	Microsoft Windows 8.1**1 64-bit / 32-bit Windows 10 64-bit / 32-bit Windows 11 64-bit
Processor	1 GHz or better
RAM	1 GB or more
Hard Drive Space	1 GB or more
Display	1280 × 720 (minimum)
Language	English, Chinese (Simplified Chinese), Japanese
Software	.NET Framework 4.6.2 or later (included in SigmaWin+ compressed archive as NDP462-KB3151800-x86-x64-AllOS-ENU.exe) Browser that supports HTML5 (to display Help) (For example: Google Chrome, Microsoft Edge)
Hardware	Option 1: PC with USB Type A + JZSP-CVS06-02-E (USB cable) Option 2: PC with Ethernet + Yaskawa MP/MPiec controller (communicates to MECHATROLINK SERVOPACKs only)

* KB2919442 and KB2919355 must be installed in order to install KB2999226 (Update for Universal C Runtime). All three must be installed to run SigmaWin+.

Software	URL
KB2919442	https://support.microsoft.com/en-us/help/2919442/march-2014-servicing-stack-update-for-windows-8-1-and-windows-server-2
KB2919355	https://support.microsoft.com/en-us/help/2919355/windows-rt-8-1--windows-8-1--and-windows-server-2012-r2-update-april-2
KB2999226	https://support.microsoft.com/en-us/help/2999226/update-for-universal-c-runtime-in-windows

Title: SigmaWin+ Version 7 Usage Notes

Product(s): SigmaWin+ Version 7.44

Doc. No. SigmaWinPlus_Ver.7

2. Upgrading Information

The below information describes the change of computer requirements in order to use this version of SigmaWin+.

1. .NET Framework Requirement Change
 - a. SigmaWin+ Version 7.23 to 7.26 required Microsoft .NET framework 4.5.2 or 4.6.
 - b. SigmaWin+ Version 7.27 and newer requires Microsoft .NET framework 4.6.2.

Title: SigmaWin+ Version 7 Usage Notes

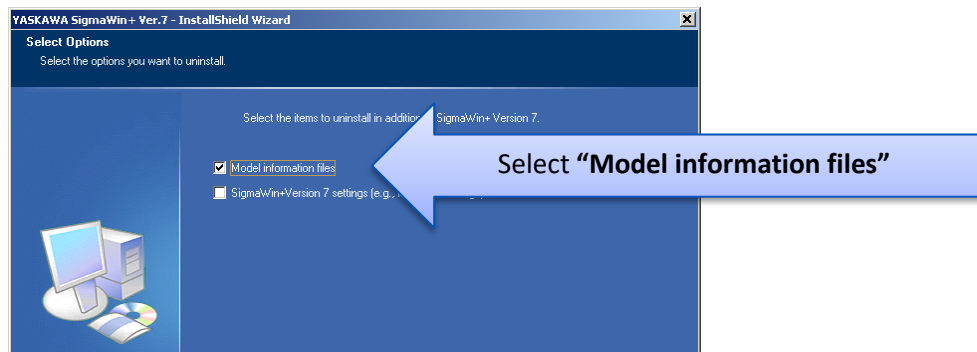
Product(s): SigmaWin+ Version 7.44

Doc. No. SigmaWinPlus_Ver.7

3. Installation Instructions

Below are the steps to follow to install SigmaWin+.

1. Confirm that the computer meets the system requirements defined in [1. System Requirements](#).
2. If a previous version of SigmaWin+ version 7 exists, then uninstall it.
 - Note: SigmaWin+ version 5 can coexist with SigmaWin+ version 7. SigmaWin+ version 5 does not need to be uninstalled.
 - When uninstalling, when prompted to “Select the items to uninstall in addition to SigmaWin+ Version 7”, always select “**Model information files**”



3. Extract the entire contents, maintaining the directory structure, of the SigmaWin+ compressed archive (*.zip file).
4. If not already installed, run and install .NET framework 4.6.2 **NDP462-KB3151800-x86-x64-AIIOS-ENU.exe**. This is included in the SigmaWin+ compressed archive.
 - Note: If SigmaWin+ is installed to PC without installing .NET Framework to it, errors may occur and SigmaWin+ will not be installed.
 - Note: .NET Framework is produced by Microsoft. For details, refer to the following:

Item	URL
.NET Framework Details	https://www.microsoft.com/en-us/download/details.aspx?id=53344
.NET Framework Versions and Dependencies	https://msdn.microsoft.com/en-us/library/bb822049(v=vs.110).aspx
.NET Framework System Requirements	https://msdn.microsoft.com/en-us/library/8z6watww(v=vs.110).aspx

5. Run and install **SigmaWinPlus7_installer.exe** from the extracted SigmaWin+ archive.

Title: SigmaWin+ Version 7 Usage Notes**Product(s):** SigmaWin+ Version 7.44**Doc. No.** SigmaWinPlus_Ver.7

4. Additional Installation Notes

Below are notes related to the installation of SigmaWin+

The following programs are installed if a newer version does not already exist on the computer:

Name	Publisher	Size	Version
Microsoft Access database engine 2010 (English)	Microsoft Corporation	108 MB	14.0.7015.1000
Microsoft Primary Interoperability Assemblies 2005	Microsoft Corporation	7.75 MB	9.0.21022

Note: Uninstalling SigmaWin+ does not uninstall these programs.

Title: SigmaWin+ Version 7 Usage Notes

Product(s): SigmaWin+ Version 7.44

Doc. No. SigmaWinPlus_Ver.7

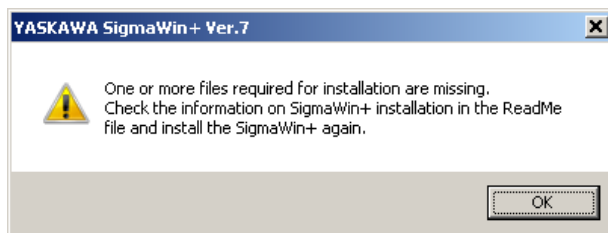
5. Installation Troubleshooting

5.1. Symptom:

Windows Message:

YASKAWA SigmaWin+ Ver.7

One or more files required for installation are missing.
Check the information on SigmaWin+ installation in the ReadMe file and install the SigmaWin+ again.



Causes:

1. The SigmaWinPlus7_installer.exe file and the AppendFiles folder are not in the same directory.
2. The SigmaWinPlus7_installer.exe was launched from the SigmaWin+ compressed archive (the archive was not completely extracted).

Remedy:

Extract the entire contents of the SigmaWin+ compressed archive, preserving the directory structure, and then run the SigmaWinPlus7_installer.exe executable file. An example of the contents extracted preserving the structure is as follows:

- AppendFiles
- Driver
- NDP462-KB3151800-x86-x64-AllOS-ENU.exe
- SigmaWin+ Ver. 7 Usage Notes [ReadMe file].pdf
- SigmaWinPlus7_Installer.exe

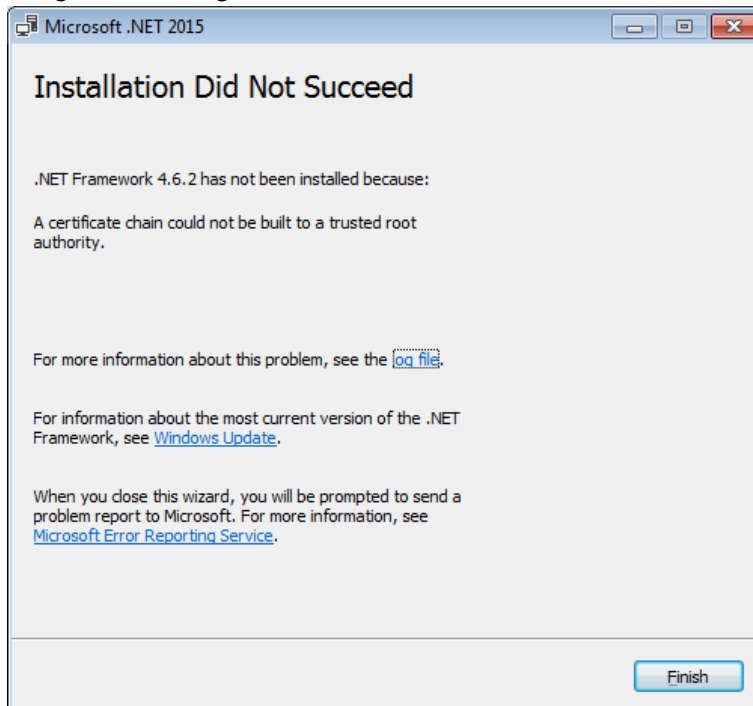
Title: SigmaWin+ Version 7 Usage Notes

Product(s): SigmaWin+ Version 7.44

Doc. No. SigmaWinPlus_Ver.7

5.2. Symptom:

Program Message: Microsoft .NET 2015: Installation Did Not Succeed



Cause:

The above error may result when installing .NET Framework 4.6.2 if the operating system is Windows 7 SP1, and the computer is offline, or in an environment where updates cannot be downloaded and installed from Windows Update.

Remedy:

Download and install the certificate to install .NET Framework 4.6.2 successfully.

Refer to: <https://blogs.msdn.microsoft.com/jpvsblog/2016/10/04/ndp462-offline-install/>

Title: SigmaWin+ Version 7 Usage Notes

Product(s): SigmaWin+ Version 7.44

Doc. No. SigmaWinPlus_Ver.7

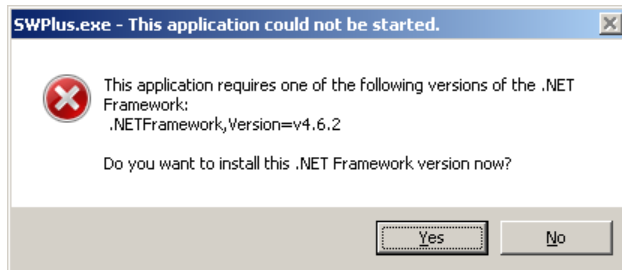
6. Program Launch Troubleshooting

6.1. Symptom:

Windows Message:

SWPlus.exe – This application could not be started.

This application requires one of the following versions of the .NET Framework: .NET Framework,Version=v4.6.2
Do you want to install this .NET Framework version now?



Cause:

When launching SigmaWin+, if the .NET Framework 4.6.2 is not installed, the error message will appear.

Remedy:

Install the .NET Framework 4.6.2 as described in [3. Installation Instructions](#).

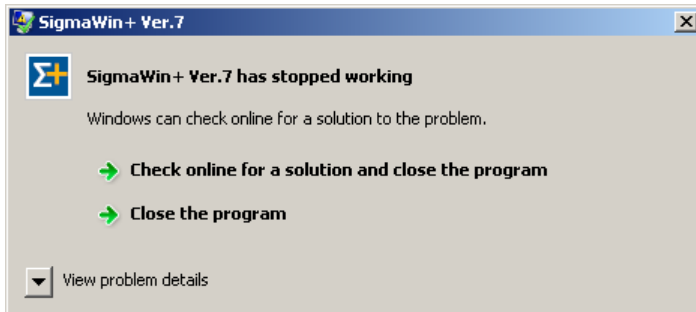
Title: SigmaWin+ Version 7 Usage Notes

Product(s): SigmaWin+ Version 7.44

Doc. No. SigmaWinPlus_Ver.7

6.2. Symptom:

Windows Message: SigmaWin+ Ver.7: SigmaWin+ Ver.7 has stopped working



Cause:

When launching SigmaWin+, if KB2999226 (Update for Universal C Runtime) is not present. This software is a requirement for SigmaWin+.

Remedy:

Install KB2999226 as referenced in [1. System Requirements](#).

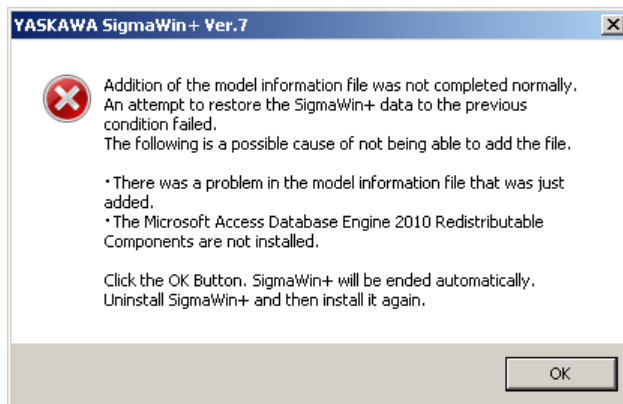
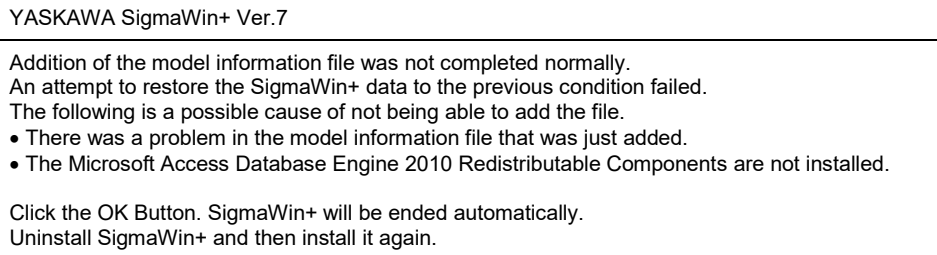
Title: SigmaWin+ Version 7 Usage Notes

Product(s): SigmaWin+ Version 7.44

Doc. No. SigmaWinPlus_Ver.7

6.3. Symptom:

Program Message:



Cause:

The model information file database could not be compiled by Microsoft Access Database components because:

- A) The Microsoft Access Database Engine 2010 was removed or was not installed automatically by SigmaWin+. Refer to [4. Additional Installation Notes](#) for details on the Microsoft Access Database Engine 2010 that SigmaWin+ automatically installs.
- B) The Microsoft Access Database Engine that exists on the computer cannot be used by SigmaWin+.

Title: SigmaWin+ Version 7 Usage Notes

Product(s): SigmaWin+ Version 7.44

Doc. No. SigmaWinPlus_Ver.7

Remedy:

1. Reinstall SigmaWin+. If problems still occur, install the Microsoft Access Database Engine before installing SigmaWin+. The Microsoft Access Database Engine can be obtained from Microsoft.

2. Follow the steps described in the Solution Center regarding this Issue.

<https://solutioncenter.yaskawa.com/selfservice/viewdocument.do?externalId=12916>

Title: SigmaWin+ Version 7 Usage Notes

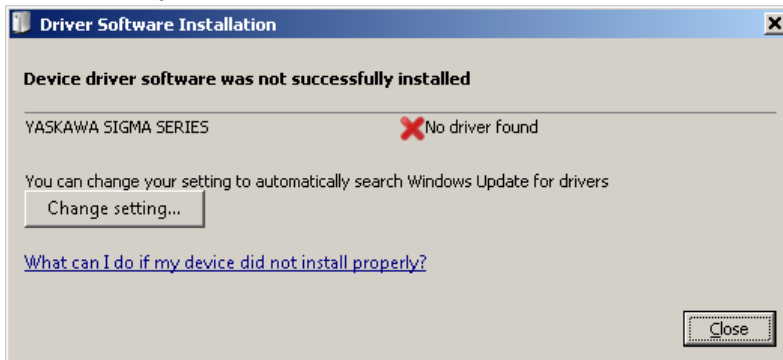
Product(s): SigmaWin+ Version 7.44

Doc. No. SigmaWinPlus_Ver.7

7. Program Usage Troubleshooting

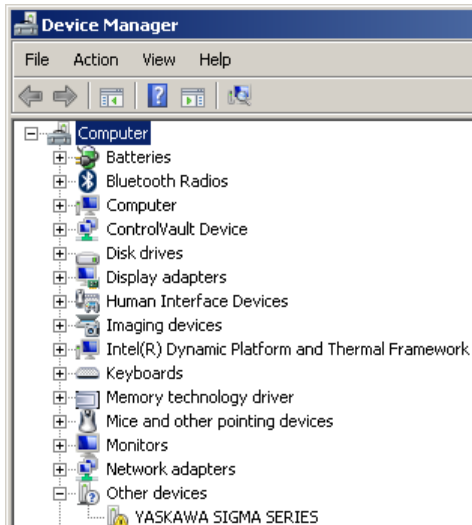
7.1. Symptom:

Windows Message: Driver Software Installation: Device driver software was not successfully installed



OR:

“YASKAWA SIGMA SERIES” appears in Device Manager in the category “Other devices”



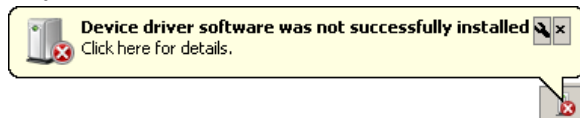
Title: SigmaWin+ Version 7 Usage Notes

Product(s): SigmaWin+ Version 7.44

Doc. No. SigmaWinPlus_Ver.7

OR:

“Device driver software was not successfully installed” appears in the Windows system tray.

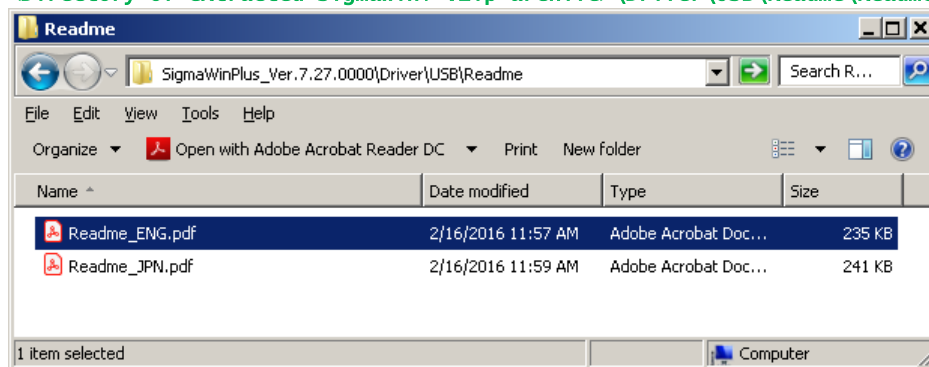


Cause:

When connecting a SERVOPACK to the computer with a USB cable, the Windows message appears. The USB driver for the SERVOPACK is not installed.

Remedy:

Install the USB driver for the Sigma Series SERVOPACK. Instructions are found at: [<Directory of extracted SigmaWin+ .zip archive>\Driver\USB\Readme\Readme_ENG.pdf](#)



Title: SigmaWin+ Version 7 Usage Notes

Product(s): SigmaWin+ Version 7.44

Doc. No. SigmaWinPlus_Ver.7

7.2. Symptom:

SigmaWin+ Message: CmServer: Can not find resource.dll! (.\\09\CmResource.dll)



Cause:

SigmaWin+ did not install the Microsoft Visual C++ Redistributable.

Remedy:

Install the Microsoft Visual C++ Redistributable found at:

<Directory of extracted SigmaWin+ .zip archive>\ISsetupPrerequisites\vc_redist_x86.exe

Alternatively, obtain and install the **X86 version** from Microsoft:

<https://docs.microsoft.com/en-us/cpp/windows/latest-supported-vc-redist?view=msvc-170>

Architecture	Link	Notes
ARM64	https://aka.ms/vs/17/release/vc_redist.arm64.exe	Permalink for latest supported ARM64 version
X86	https://aka.ms/vs/17/release/vc_redist.x86.exe	Permalink for latest supported x86 version
X64	https://aka.ms/vs/17/release/vc_redist.x64.exe	Permalink for latest supported x64 version. The X64 Redistributable package contains both ARM64 and X64 binaries. This package makes it easy to install required Visual C++ ARM64 binaries when the X64 Redistributable is installed on an ARM64 device.



Note: The X64 version does not resolve this issue.

Title: SigmaWin+ Version 7 Usage Notes

Product(s): SigmaWin+ Version 7.44

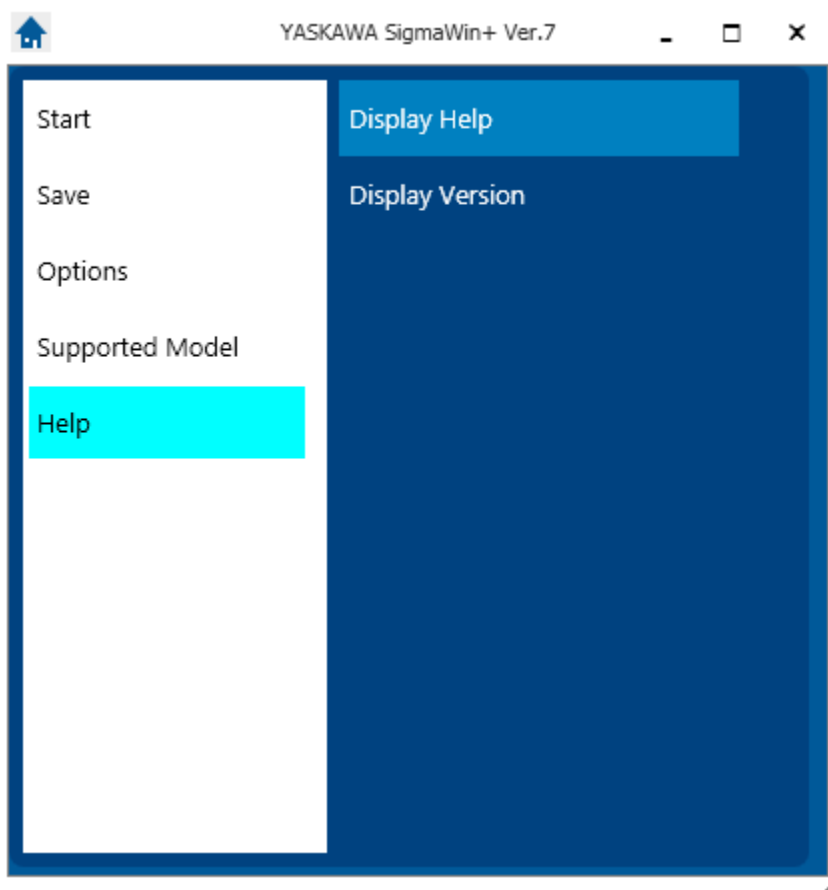
Doc. No. SigmaWinPlus_Ver.7

7.3. Symptom: (All other symptoms not described in this document)

Remedy:

Refer to SigmaWin+ Help.

The Help can be found by launching SigmaWin+ and selecting the menu as shown:



Alternatively, the help file can be viewed in an HTML5-compatible browser.

The default location of the help file is at:

[c:/Program Files \(x86\)/YASKAWA/SigmaWinPlus7/Help/Sigmawin7Help.html](c:/Program Files (x86)/YASKAWA/SigmaWinPlus7/Help/Sigmawin7Help.html)

Title: SigmaWin+ Version 7 Usage Notes

Product(s): SigmaWin+ Version 7.44

Doc. No. SigmaWinPlus_Ver.7

If SigmaWin + is not yet installed, the help file can be accessed by extracting the archive and viewing the HTML file.

The help file archive is located at:

<Directory of extracted SigmaWin+ .zip archive>\SIETS80000134*.zip

Note: * denotes wildcard